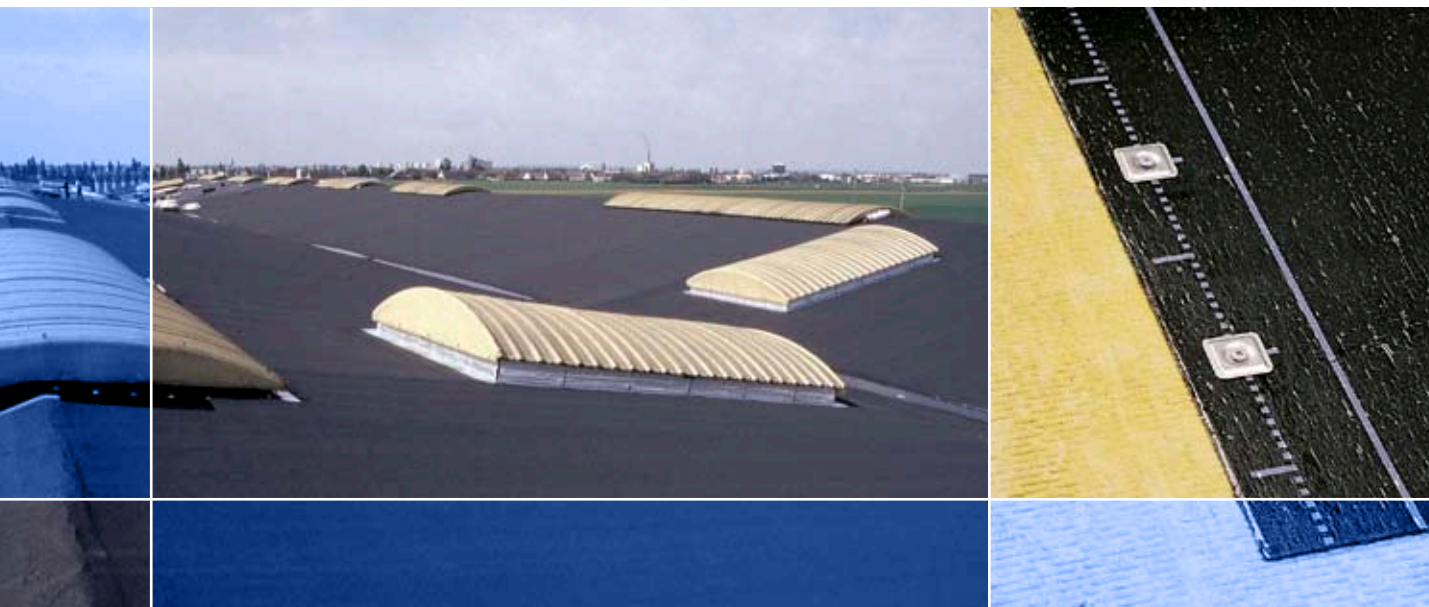


# Paradiene® FM

SBS elastomeric bitumen roofing  
underlayer for mechanical fixing



- ▶ Two layers, one torch-welded interface and fixings along the side-laps
- ▶ Easy torching of the joint due to the fusible film on the underface
- ▶ High resistance to cracking, to pull-off and to puncturing
- ▶ Absorption of substrate movements due to the mechanical fixing
- ▶ When re-roofing, removal of the existing waterproofing system is unnecessary

## Packaging

Rolls of 10m x 1m ▪ Weight: 34kg

## Main uses

Paradiene FM is applied as underlayer of a coloured granule-finished double layer system, specifically designed to be mechanically fixed (with Paradiene 30.1 GS as capsheet) onto wearing elements and substrates, as followed:

- on steel deck roofs;
- on wood boarding, exterior grade plywood, chipboard and composite boards;
- on inaccessible concrete roofs;
- on insulation boards complying with local technical standards.

## Description

- SBS elastomeric bitumen layer surfaced with a fusible film.
- Thickness: 2.5mm
- Polyester composite reinforcement: 130g/m<sup>2</sup>.
- Selvedge with a guide line for mechanical fixings.

## Performances

- See table below.
- Fire rating: Paradiene FM + Paradiene 30.1 GS sytem – T 30/1 French standard.

## Application

- Paradiene FM: by linear mechanical fixing at the 10cm wide overlap. Then the lapped joints are fully torched.
- The Paradiene 30.1 GS cap-sheet is fully torch-welded on Paradiene FM.

## Complementary information

- Product data sheet: Paradiene.
- Colours: see data sheet: "Colours on your roofs".
- CSTB Agrément certificates: Paradiene FM.
- Factory Mutual Approval OB6A0.AM.

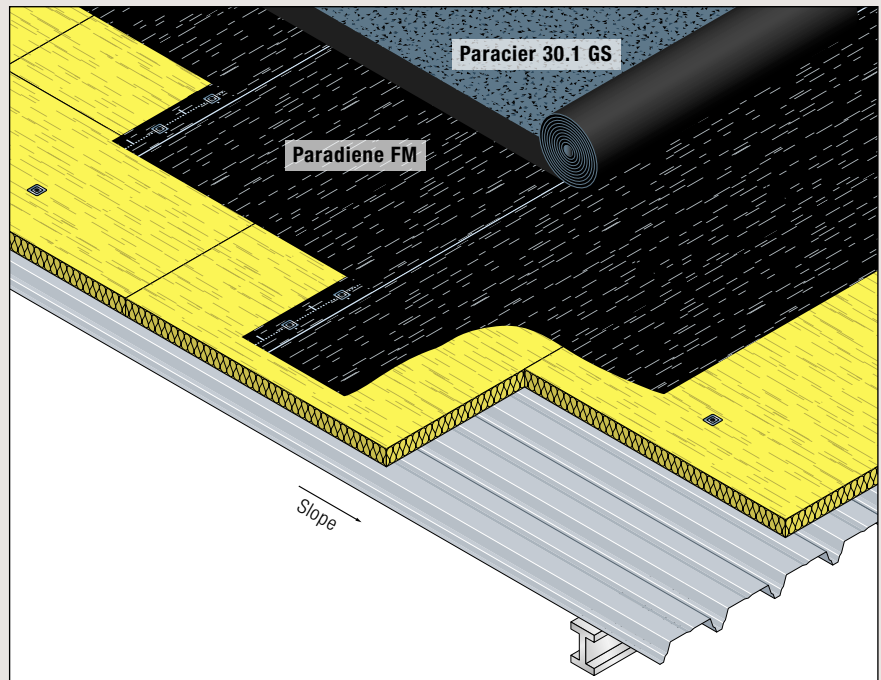
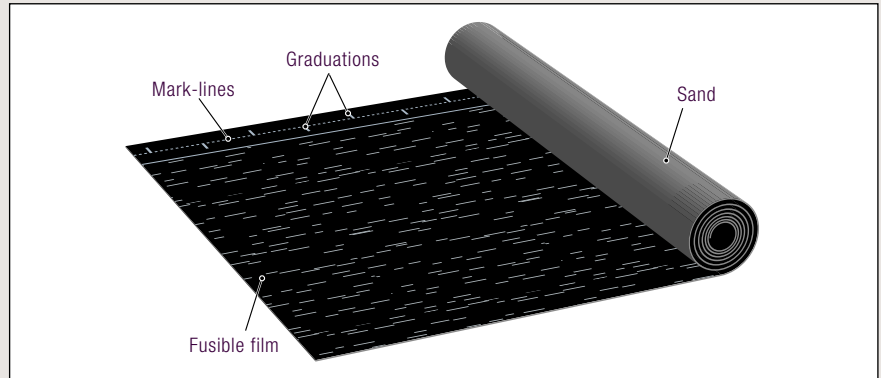
## Customs nomenclature

- 68.07.10.19.0.00.0.P.

## Safety

Paradiene FM is not rated dangerous (for the applications described in this document).

This document is only a guide. Siplast-Icopal reserves the right to change the composition and fixing recommendations of products as a result of evolution of knowledge and technology.



(Average values)	Mineral reinforcement	Polyester reinforcement
Tensile strength at break (L x T) (N/5cm)	500 x 300	550 x 350
Elongation at first break (%)	—	4
(L x T)	20 x 30	40 x 30
Nail tearing resistance (N)	—	200
(L x T)	200 x 170	150 x 150