

Product Technical Information

ITA/ATEXP/402
 Rev.2 – 12/09/11
 Page 1/3

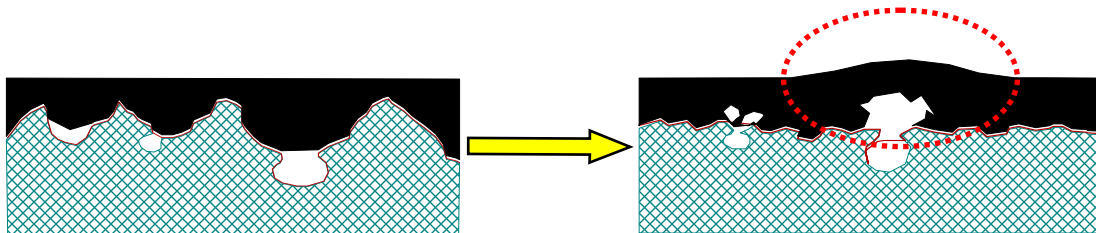
FORDECK

(two components epoxy sealing coat for concrete deck)

DESCRIPTION AND SCOPE OF APPLICATION

FORDECK is used as a sealing coat for concrete deck before the application of bituminous membrane like **PARAFOR PONTS** or **PARAFORIX**.

FORDECK has a perfect adhesion to concrete deck. Such adhesion allows to avoid the blistering phenomena (which could appear during warm periods).




Blistering phenomena

FORDECK needs to be sanded to ensure the cohesion of the bituminous membrane.

PERFORMANCES

PROPERTIES	Units	Nominal values
Viscosity at 40°C (resin + hardener)	Cps	600
Dry extract	%	100
Cross-linkage time	Hours	24
Hardener flash point	°C	> 200
Epoxy density		1
Hardener density		1,33
Ratio resin/hardener (in volume)		1/1
Minimal temperature of application	°C	> 10
Polymerization time at 20°C	Day	7
Colour		Beige

ISO 9001 REFERENCE DOCUMENT

. Our company has been awarded the ISO 9001 certificate for all its establishments in France.	
. The present document is the ISO 9001 reference document.	

Product Technical Information

ITA/ATEXP/402
Rev.2 – 12/09/11
Page 2/3

Characteristics of sand to be used

- Grading includes between 0.7mm and 1.2mm
- Kind : quartz
- Sand is not delivered with **FORDECK**

PACKAGING

FORDECK is a sealing coat for concrete, without solvent, composed of 2 components: an epoxy resin (component A) and an amino hardener (component B).

Both components are delivered in separated cans: one of 20kg (component A, 20l) and one of 30kg (component B, 20l).

Per pallet: 12 cans of component A + 12 cans of component B.

STORAGE

Should not be stocked more than 6 months.

Must be stocked in a dry room with a temperature < 15°C.

APPLICATION**Preparation of the mixing**

Concrete deck must be at least one week old.

Appearance of the concrete must be in accordance with specifications of STER 81 (sand height = 1.5mm). **FORDECK** is a sealing coat, not a waterproofing product.

Bearing element must be dry and clean from any non adhesive product, otherwise it must be treated by gritting or shot-blasting.

Application of FORDECK

Component A and component B are delivered in appropriate packaging. Before mixing, component B must be homogenized by using a mixer (speed around 400 revs).

Then, component A and component B are mixed by using a mixer (speed around 400 revs) until obtaining a homogenous mixing.

Then, **FORDECK** has to be applied during a delay of 20 minutes (for temperature around 15°C).

Product Technical Information

ITA/ATEXP/402
Rev.2 – 12/09/11
Page 3/3

FORDECK is applied in two coats.

First coat: 500 g/m² - drying time: 24h

Second coat: 350 g/m².

Quantity of sand to apply: 3 kg/m² (must be applied immediately after the second coat).

Before applying the bituminous membrane, excess of sand will be brushed.

FORDECK must not be applied when raining.

Rain can affect **FORDECK** during the 4th hours following the application. Product must be protected during this delay.

FORDECK must not be applied with temperatures lower than 8°C.

Temperature will affect the opening time of the product. During warm conditions, it is recommended to apply **FORDECK** during decreasing temperatures cycles.

Application of the bituminous membrane

Bituminous membrane is applied at least 24h after the application of the second layer of **FORDECK**.

Flame must be oriented on the membrane and not on **FORDECK**.